

Fixed wireless

A new opportunity to build together.



More than ever before, tenants and visitors expect to stay connected to work and life while maintaining access to all the latest technologies—because staying connected is no longer an added benefit, it's a valuable amenity. Fixed wireless is a complementary way of providing high speed broadband internet or ethernet access to tenants, visitors and guests and brings many benefits.

- › Increased property value and tenant satisfaction
- › Provides another connectivity option for tenants
- › No cost to install
- › Easy-to-implement connectivity
- › Low visual impact to your rooftop
- › Additional revenue opportunities

With more than 25 years of experience deploying communications infrastructure, and over 40,000 towers and approximately 80,000 route miles of fiber, we're the ideal partner for all of your in-building connectivity needs—from small cells and rooftops to fiber. When you work with us, you get a partner who is already invested in helping you maximize the immediate and long-term value of your property. And as you continue to pursue new possibilities, we'll be ready to connect you to the technologies and innovations you need to stay ahead.

What is fixed wireless?

Fixed wireless is a type of wireless technology that uses communications equipment to connect two fixed locations, e.g. building to building or building to tower. Using a radio link, the technology can scale bandwidth from 100Mbps to 10Gbps. Since it uses different frequencies, it does not interfere with existing wi-fi or cellular equipment.

What type of equipment is used?

Fixed wireless equipment is small, efficient and has a low visual profile.

Small and lightweight

- › Equipment size ranges from 8"x8"x4" to 24"x24"x15" and weighs from less than 10lbs to 32lbs.

Silent and low-power

- › Passively cooled radios mean you won't hear or see any cooling units.
- › Radios use under 60 watts of power.

Low-profile

- › Ability to blend the radios into the existing environment.

Minimal rooftop footprint with multiple mounting options

- › Wall mount: little to no rooftop space needed.
- › Non-penetration mount: mounts reside on rubber mats protecting the roof surface; 4'x4' of roof space is typically required.

Minimal cabling

- › Only requires a fiber jumper and DC power cable.

Ability to use existing infrastructure

- › If you have an existing fiber distribution panel or riser system, you can utilize without significant construction or roof penetration.

FCC-permitted radios and resilient, carrier-grade equipment

What is the installation process?

There's a simple three step process:

- 1. Project strategy and planning:** We work closely with you to design and plan the project to ensure all aspects of the build meet your specific requirements. Every detail is examined and planned out, so you know exactly what to expect.
- 2. Network design:** We'll use specific tools to determine the exact location of our equipment, all while working closely with you, local officials and our customers to ensure we meet everyone's unique needs.
- 3. Implementation:** A fixed wireless solution is a simple and easy installation process with minimal building interruptions and modifications.

How long is the installation?

Since fixed wireless solutions utilize existing rooftop structures, installation is quick and simple—typically completed in one day.

What will the equipment look like?

Since the equipment is small, so is the impact to your rooftop.



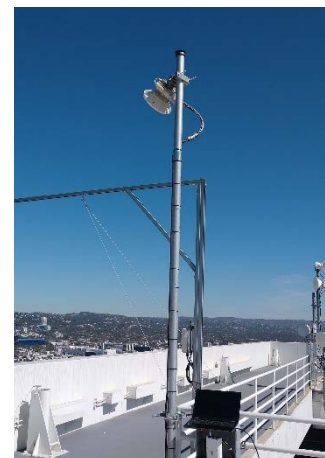
Typical installation with no roof penetration.



New riser system can be built, or any existing conduit system can be utilized.



Equipment can be hidden from street view due to its small size.



Existing roof structures can be utilized, minimizing rooftop space requirement.

To learn more about fixed wireless for your building, contact CCFrealestate@crowncastle.com