

Building connections.

A toolkit for property managers
and venue operators.



Get started.

Our infrastructure

Why Crown Castle

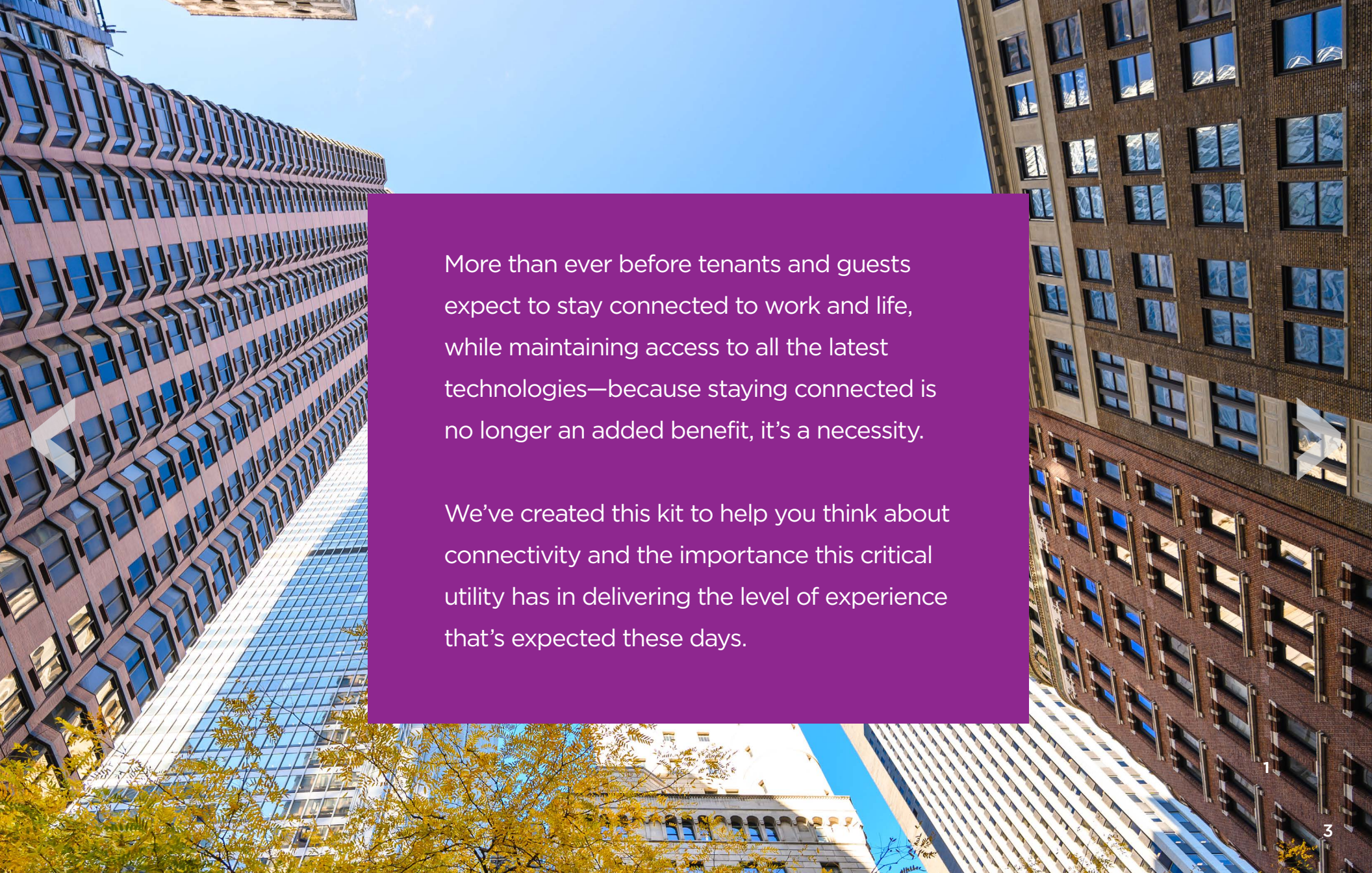
How we work with you

Your connectivity checklist

Get social with sample content

More resources





More than ever before tenants and guests expect to stay connected to work and life, while maintaining access to all the latest technologies—because staying connected is no longer an added benefit, it’s a necessity.

We’ve created this kit to help you think about connectivity and the importance this critical utility has in delivering the level of experience that’s expected these days.

Our infrastructure.

The single provider you need.

We can help you put the right infrastructure in place to enhance connectivity, increase security and help you respond rapidly to a changing environment. We'll help you prepare for embracing new technologies like 5G and IoT.

1. Small cells

Small, discreet antennas—both inside, and around your property—add needed capacity and extend wireless service to hard-to-reach areas. They will serve as a key component for new technologies like 5G and the internet of things.

2. Fiber

Fiber's nearly limitless capacity can provide enterprise-grade high-speed data directly to businesses. It also underpins many of your property's wireless connections, including small cells, and it can accommodate advanced technologies like cloud computing, 5G and real-time security monitoring.

3. Rooftop antennas

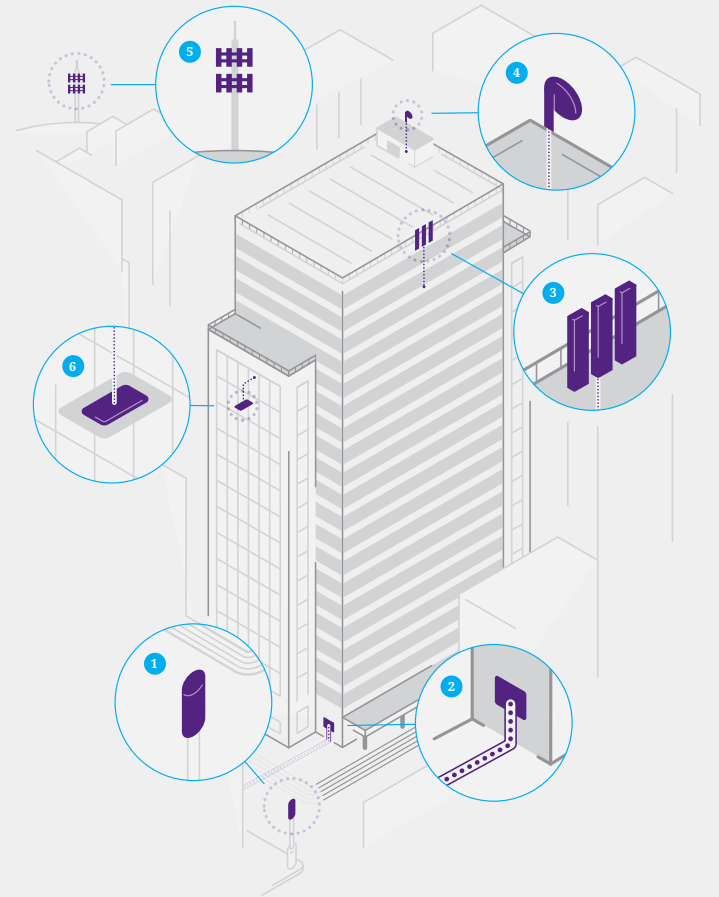
Your rooftop can serve as valuable real estate to extend wireless voice and data.

4. Towers

Towers near your property provide blanket coverage that serves as the foundation for all wireless voice and data service.

5. In-building solutions

Distributed Antenna Systems (DAS) and other in-building Radio Access Network (RAN) solutions bring carrier coverage and private networking into your buildings.



Why Crown Castle.

How we're different.

When you work with us, you get a partner who is dedicated to understanding your needs and delivering a custom solution for your precise requirements.

Reach

We have a nationwide portfolio of towers, rooftops, small cells and fiber that is unique and unmatched and all works together to bring value to your property.

Experience

For 30 years, we've worked with thousands of building owners and property managers as a single source provider of communications infrastructure—including over 250 premier venues and approximately 37,000 properties and access to more than 10,000 rooftops.

Innovation

We understand how critical connectivity is to provide cutting-edge tenant and guest experiences.

Partnership

As the last owner of our network assets and a REIT, we value our partnerships with building owners and venue operators and are as invested in the successful use of your property as you are.

40K+

towers

~115K

small cells on air
or under contract

~90K

route miles of fiber

How we work with you.

Keeping it simple. Making it easy.

We have a long history of partnering with property and venue owners so we understand the unique challenges you face. From planning to implementation and beyond, we'll work closely with you to build a seamless process for your tenants and guests—without disruptions.

OUR 3-STEP APPROACH

01 PROJECT STRATEGY AND PLANNING

Together, we'll create an actionable plan including a timeline and milestones that meet all your needs within well-defined parameters. It will include a site survey or assessment.

02 NETWORK DESIGN

We'll review initial network designs and look at locations, nearby assets and other requirements—adjusting along the way as needed. We'll get approvals and submit any necessary permits to local regulatory bodies, with whom we have established relationships.

03 IMPLEMENTATION

With permits in hand, we'll work with our network of vetted contractors to execute on your designs, handling all construction management with various vendors. Once the build is complete, it will go through an internal quality control review to ensure proper performance once integrated.

Your connectivity checklist.

Use this checklist to guide your connectivity planning so that your focus can remain where it needs to be—on managing your properties.

NAVIGATING NEW CONSTRUCTION

Schedule a planning session with connectivity experts that can help you leverage new technologies to build smarter, more efficient spaces.

Bring an infrastructure partner in early during construction to support more efficient deployments.

Consider the importance of diverse connections and high resiliency for a better and more engaging experience.

Partner with a provider who meets the technical requirements of your tenants and guests, but equally values the aesthetics and integrity of your property.

CONNECTIVITY IS PART OF THE TENANT STRATEGY

Make sure you're thinking about the value of connectivity in your tenant and guest strategy—tenants consider it a utility just like electric, gas or water.

Work with a provider that brings innovative approaches to your location and enables you to experiment with new technologies.

Offer a diverse selection of providers and additional connectivity options for tenants.

YOUR BUILDING'S REPUTATION MATTERS TOO

Require providers to give advanced notice before entering your property to provide a secure environment for tenants and guests.

Focus on providers that offer secure, reliable connectivity.

Be knowledgeable on the support offered by providers for your tenants and guests, including network uptime and the availability of local service teams.

Connect with the people who matter to you.

Connectivity is an essential amenity—that’s why we’ve made it easy for you to add value for your tenants by providing sample content.

GET SOCIAL WITH SAMPLE POSTS FOR TENANTS.

Focused on your future

“Just as you expect the lights to turn on at the flick of a switch and the water to run at the turn of a faucet, having next-gen technology at your fingertips is not optional. That’s why we offer a diverse selection of infrastructure solutions partners and connectivity options to support your needs today—and in the future.”

Business friendly

“Choosing a space for your business is one of the most important decisions you’ll make. As tech continues to evolve, you need to know your organization is at the forefront. That’s why we’re constantly investing in technology for our buildings so we’re ready to meet any tenant’s needs, like #IoT and #AI. Does your current property do that?”

Smart building benefits

“Smart technology is changing the way we live our lives—from work to home to play and everything in between. That’s why {BUILDING NAME} has the right infrastructure solutions partners in place, ready for the benefits of next generation technology. Not sure what leasing in a smart building can do for you? [Check it out.](#)”

[Download posts and images >](#)

EMAIL CONTENT TO SHARE IN TENANT UPDATES.

[Download sample emails >](#)

Subject line: **Connectivity is a necessity. Here's how we make it easy.**

Option 1

Staying connected is no longer an added benefit for your business—it's a necessity just like electricity or water. You need infrastructure that supports your biggest challenges from reliable connectivity to increased security and support for new technologies like 5G and the internet of things.

We know you've got your hands full running your business, so to keep it easy our property offers a diverse selection of infrastructure solutions partners and connectivity options. Just ask us to learn more.

Thanks,
Your property management team

Option 2

As technology continues to evolve—from 5G to the internet of things—your business needs to be prepared for what's next. Have you considered how your network will accommodate these changes?

We have. That's why we've chosen infrastructure solutions partners at {INSERT ADDRESS OR BUILDING NAME} with your future in mind. If this sounds like something you'd be interested in learning more about, [click here](#).

Thanks,
Your property management team

GET SOCIAL WITH SAMPLE POSTS FOR VENUES.

Future focused

“Just as you expect the lights to turn on at the flick of a switch and the water to run at the turn of a faucet, your guests expect next-gen technology at their fingertips at your events. That’s why we work with an experienced partner who can support connectivity needs today—and in the future.”

Planning your event

“Choosing a space for your next event is an important decision to make. With so much to plan for, you need to feel confident that connectivity issues are a thing of the past. That’s why we have the right infrastructure solutions partners who are helping to enable new technologies—like #IoT and #AI—so we’re ready to meet your needs.”

Smart technology

“Smart technology is changing the way we gather—from hybrid events to higher experience expectations and everything in between. That’s why {VENUE NAME} has the right infrastructure solutions partners in place, ready for the benefits of next generation technology. Not sure what this means for your next event? [Check it out.](#)”

[Download posts and images >](#)

EMAIL CONTENT FOR VENUES TO USE.

[Download sample emails >](#)

Subject line: Connectivity at your event is critical. We make it easy.

Option 1

Offering peace of mind to visitors at {INSERT ADDRESS OR BUILDING NAME} is our priority because we want your event to go off without a hitch. That includes ensuring reliable connectivity so your guests don't skip a beat. You want them engaged with their experience, not struggling to use their phones to check up on what's going on at home or work. We've chosen Crown Castle as our infrastructure solutions partner because they understand the importance of keeping your guests connected.

Are you ready to plan your next worry-free event?

Thanks,
{INSERT NAME}

Option 2

As an event host you want your guests to be able stream videos, share special moments on social media and take advantage of all the new technologies that make an event even more engaging. That's why we've chosen Crown Castle as our infrastructure solutions partner at {INSERT ADDRESS OR BUILDING NAME}. If you'd like to learn more about how their connectivity solutions can help your event go off without a hitch, [click here](#).

Thanks,
{INSERT NAME}

More resources.

OUR SOLUTIONS

Wireless solutions

- › Towers
- › Small cells

Fiber solutions

- › Dark Fiber
- › Ethernet
- › Wavelength
- › Private Networks
- › Managed SD-WAN
- › Internet Access
- › Colocation

Added solutions

- › Cloud Connect
- › Optical Encryption
- › Ultra-Low Latency
- › DDoS Defense
- › Video Transport

OTHER INFORMATION

- › Our Role in Your World Infographic
- › Our Rooftop Alliance Program

Finding the right connectivity solutions for your property can be challenging.

That's why our connectivity experts are here to help: 1-833-464-0395.



[CrownCastle.com](https://www.CrownCastle.com)

Crown Castle owns, operates and leases more than 40,000 cell towers and approximately 90,000 route miles of fiber supporting small cells and fiber solutions across every major US market. This nationwide portfolio of communications infrastructure connects cities and communities to essential data, technology and wireless service—bringing information, ideas and innovations to the people and businesses that need them.

© 2024 Crown Castle

CC-1024-0251